

2026 PMEA All-State Contemporary A Cappella Ensemble Audition Instructions

Time Frame- Wednesday 11/12/25- Tuesday at NOON 1/6/2026

1. Directors who wish to have their students (grades 10-12 only) considered for selection should: Complete the application form with payment (**\$20.00**) online at www.pmea.net, scroll to “Conferences and Events” and then click on “PMEA All-State Information”. The Director must be a current PMEA member. ***All student applicants must upload a headshot photo - (ABOVE the SHOULDERS) labeled LAST NAME, FIRST NAME (i.e. Smith, John)***
2. The Audition selections must be submitted online at the PMEA Website listed above. The audition selections must be recorded from start to finish without cuts and/or splices. SPECIFIC INSTRUCTIONS on how to submit EACH SELECTION are listed BELOW as well as on the Application. ***ARMS, FINGERS and HEAD must be visible when submitting the application for recording. NO EAR BUDS or HEADPHONES are permitted to be used in the recording.*** To obtain the best audio quality, a good microphone as well as high-end computers or digital recording devices for the recording equipment are suggested. * **NEW- A VIDEO** outlining “how to make a better recording online for submission” is available on the PMEA website. Please take the time to review the recording instructions.
3. No identifying clothing may be worn (i.e. no school t-shirts, no name identification, no PMEA, NAFME All Eastern or National shirts).). ***Additionally, please do NOT include any identifying information in the video file name or in the contents of the recording.***
4. The “Window of Opportunity” to record begins **Wednesday 11/12/2025** and ends at **NOON, Tuesday 1/6/2026**. **Once completed, a confirmation email will be sent to the address used to register.** Please check your SPAM filters for any communications and also check with your IT Administrator if a school email address is used and no email is received.
5. The director is asked to view the file and verify the recorded audition is consistent with the student’s level of performance.
6. Although PMEA checks to ensure the videos play in the correct format and the file can be opened- PMEA is **NOT** responsible for the content repertoire of the video. **Please follow the repertoire and file labeling instructions.**
7. Students submitting an audition for Featured Bass or Vocal Percussion may also submit a second audition for another voice part.(Soprano, Alto, Tenor, Baritone) However, a separate payment and application is required for each submission. **All requirements for EACH voice part must be met and sent on a separate upload video.**
8. Results of the 2026 PMEA All-State Contemporary A Cappella Ensemble will be posted on **Friday, 1/30/2026** via the PMEA Website- www.pmea.net.
9. If selected for the 2026 PMEA All-State Contemporary A Cappella Ensemble, the student will no longer be eligible for any of the other All-State Ensembles.



PMEA All-State Contemporary A Cappella Ensemble

2025-2026 Audition Information

PMEA is excited to announce this year's auditions for the PMEA All-State Contemporary A Cappella Ensemble! Contemporary A Cappella is an innovative and creative style of singing that includes many genres of music and relies solely on the human voice. We hope you will consider submitting an audition to be part of this year's All-State Contemporary A Cappella Ensemble!

This style requires a different set of skills than what many usually associate with singing in a traditional choir. We encourage you to explore recordings and videos of this style as you prepare to submit an audition. Movement and expression are key elements of contemporary a cappella. While we want these to be evident in your audition, please do not allow them to distract from your overall vocal performance.

With the exception of singing along to the scale tracks for Part 2 - Range Demonstration and the use of a metronome for Vocal Percussion, all portions of the audition must be sung a cappella without tracks or metronomes.

The Window of Opportunity to submit auditions via SUBMITTABLE is **Wednesday, November 12, 2025, through Tuesday, January 6, 2026, at NOON**. PMEA will announce the results of the 2026 All-State Contemporary A Cappella Ensemble on Friday, January 30, 2026, on the PMEA website - www.pmea.net

The All-State Contemporary A Cappella Ensemble will consist of Ensemble Singers, ONE Featured Bass Singer, and ONE Vocal Percussionist.

- **Ensemble Singers** should choose the part that best matches their range (Soprano, Alto, Tenor, or Baritone). Results will be posted with just names as students may be assigned to various parts depending on the performance repertoire (i.e. - a student may be assigned Soprano 2 for one song and Alto 1 for another).
- The **Featured Bass** auditions should highlight a strong bass sound while also demonstrating excellent intonation and style.
- **Vocal Percussion** auditions will only include their vocal percussion recording. Be sure to demonstrate your creativity and a wide variety of sounds while also showing that you can stay in the groove and control the tempo.

Students submitting an audition for Featured Bass or Vocal Percussion may also submit a second audition for another voice part.

All Singers

PART 1 - Part Singing

These excerpts will be judged and scored by PMEA Directors with experience in the contemporary a cappella style. The PMEA All-State Contemporary A Cappella Rubrics will be used to judge the excerpts.

Take Me Home - SATBB A Cappella - arr. Roger Emerson

Purchase Information

J.W. Pepper - #10606839 - \$2.30 + shipping

<https://www.jwpepper.com/collection/6710/2026-pmea-contemporary-a-cappella-ensemble>

Listening Link

<https://www.youtube.com/watch?v=CEPvZIW2PSE>

Audition Excerpts

ALL Parts - measure 26 ('We light up the sky...') to the downbeat of measure 41 ('...long.')

- Soprano, Alto, Tenor, Baritone, & Bass will sing their assigned parts as written
 - Bass should sing the lower octave when the part divides
 - Do NOT include the finger snaps

High and Dry - SSATBaB A Cappella - Kerry Marsh

Purchase Information

Composer's Website - Audition Excerpt: \$3.00 - Rehearsal Tracks: \$2.00 each

https://kerrymarshvocaljazz.myshopify.com/products/high-and-dry-pmea-2026-contemporary-a-cappella-audition-excerpt-and-tracks?_pos=1&_sid=4cdd3998d&_ss=r&shpxid=645e3d2d-e5b2-4b50-8be2-982e00ad5f1c&variant=45610575528089

The composer has created a special link to purchase audition materials created just for PMEA. These are offered at a discounted rate compared to the published version. Directors are asked to have each student purchase their own copies to ensure the composer is appropriately compensated.

Listening Link

<http://www.kerrymarshvocaljazz.com/media/scoreflipper/ScoreFlipper.html?sfParam=highanddry>

Audition Excerpts

ALL Parts - The entirety of the Audition Excerpt or measure 39 (Rehearsal E) to the downbeat of measure 54 ('...daht'), from the full publication

- Soprano, Alto, Tenor, Baritone, & Bass will sing their assigned parts as written
 - For SSA 3-part divisi, Sopranos will sing the top notes, and Altos will sing the bottom notes

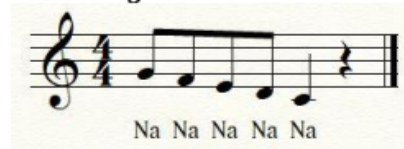
PART 2 - Range Demonstration

All applicants must demonstrate their vocal range by singing along with the [recorded tracks](#) (ascending and descending). Start singing after the count off at the beginning of each track in your most comfortable octave using the syllables written below. Sing as high or low as you are able for each track then stop. These will NOT be scored by the judges but the Guest Conductor will use these recordings to assign parts and solos. We want to hear your full range. Please sing your best but do not allow diminished tone or volume to cut your range demonstration short.

Ascending Pattern



Descending Pattern



Vocal Percussion

This can include anything and everything you're comfortable with (straight-ahead beats, fills, various sounds, freestyle beatboxing, etc). Record a track with a metronome at 120 bpm that demonstrates the following sounds (snare variants like implosive/explosive Ks and Ps, kick drum, toms, hi-hat, a variety of cymbal sounds). The track should begin with 8 measures of a simple beat that demonstrates your ability to groove and provide a steady beat. You can then transition into any other sounds and styles you would like to demonstrate, such as auxiliary percussion or other effects. The metronome should be a neutral sound that can be heard throughout the recording while not overpowering the performance.