



Music Education Advocacy and Public Policy in Pennsylvania

Mark Despotakis
Chair, PMEA Advancement of Music Education Council

Director of Market Development, Progressive Music





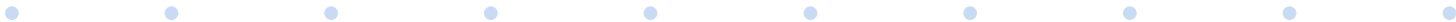
What do you need to know?

- Why do we advocate?
- How has PMEA chosen to advocate?
- What have we done in the past year?
- How do we work outside the organization?
- How do we fit into the current political landscape?





Why Do We Advocate?

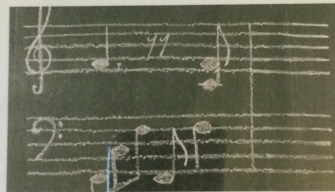


Why Do We Advocate?



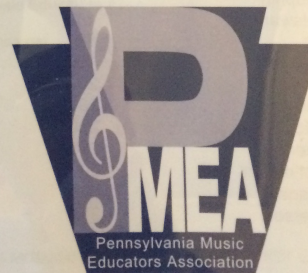


How Has Music Education Impacted Your Life?



Read The Stories Of Over
1,400 Pennsylvanians That
Believe In The Power And
Value Of Music Education

March 2015





How Has Music Education Impacted Your Life?

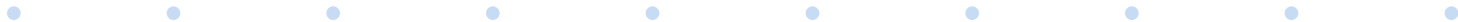
- I know this sounds cheesy, but music makes me who I am. It's hard to understand if you've never picked up an instrument before, but when you play music it's like you can express yourself however you want. Music helps me learn about myself, and it helps me put myself out there more easily than I normally would. — James Speranza, Student, Radnor HS, Delaware County, PA





How Has Music Education Impacted Your Life?

- Music has become my entire life. Whenever I'm upset, angry or even happy I automatically turn to music. Be it singing, playing piano, or writing, it is my outlet for all emotions. I feel music has turned my life into a better place due to the fact that I am capable of expressing my emotions in ways that many people can't. Music can change a person's life, just like it has mine. — Benjamin Thomas, Student, Jersey Shore Area HS, Lycmoning County, PA





How Has Music Education Impacted Your Life?

- The teachers who know me best are the ones who have brought music into my life. Music allows me to connect with other people and to learn more about myself. Even as I change through the years, I know that music is the one thing that will change with me. It has always been a solid point in my life and it always will be. — Lacey Shumake, Student, Northwestern HS, Erie County, PA





What Does The Research Say?

- Dr. Nina Kraus, Northwestern University
 - Everyday listening skills are stronger
 - Listening skills are closely tied to the ability to perceive speech in a noisy background and pay attention
 - Musical experience strengthens many of the same brain functions that are impaired in individuals with language and learning disabilities – ex. Differentiation between speech and syllables
 - Pitch, timing and timbre. Kraus argues that learning music improves the brain's ability to process all three, which helps kids pick up language, too. Consonants and vowels become clearer, and the brain can make sense of them more quickly.





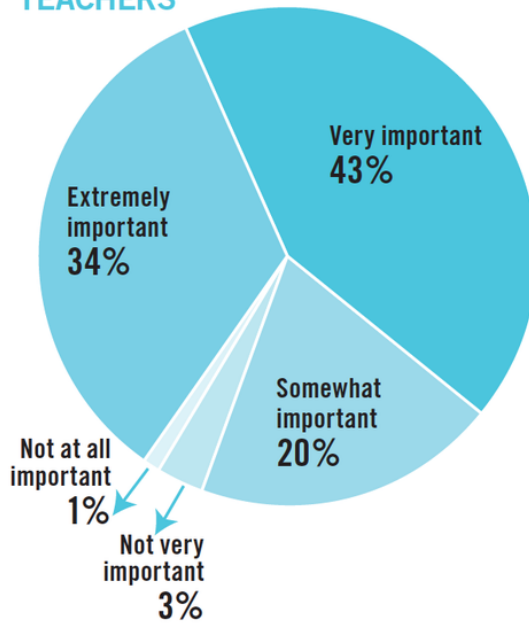
What Does The Research Say?

Access to Music and Arts Education “Extremely” or “Very” Important to Most Teachers and Parents



New NAMM Foundation study “Striking A Chord” shows parents and teachers feel access to music education is important.

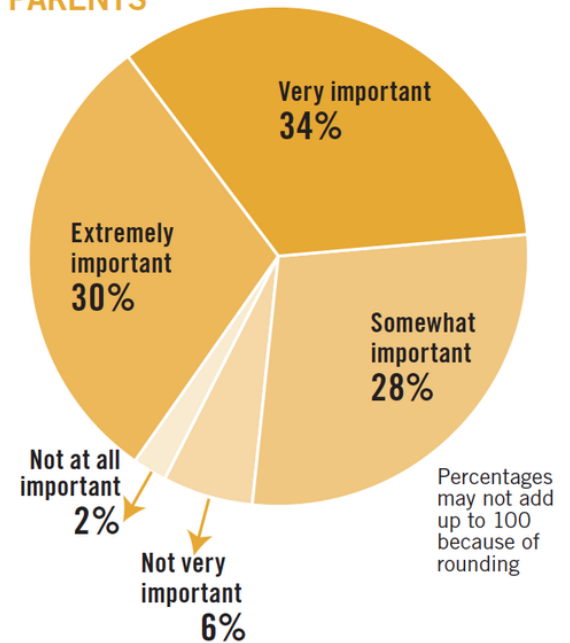
TEACHERS



Teacher Q

How important is it for K–12 students to have access to or be able to participate in music and arts education at school?

PARENTS



Parent Q

How important is it for your child to have access to or be able to participate in music and arts education at school?

Source: Grunwald Associates LLC



The Way PMEA Advocates

- Advancement of Music Education Council
- District Advocacy Reps
- Increased role in Harrisburg conversation
- Developing our brand in Harrisburg
- Partnerships:



Pennsylvania Arts
Education Network

artseducationpa.org





PA Regulations Related to Arts Ed

- School entities MAY develop, expand or improve existing academic standards in the following content areas:
 - ... arts and humanities...
- **Elementary education:** primary and intermediate levels
 - Planned instruction aligned with academic standards shall be provided to every student every year in the primary program. Planned instruction may be provided as separate course or other disciplinary activity.
 - The arts, including active learning experiences in art, music, dance and theatre.
 - Planned instruction in the following areas shall be provided to every student every year in the intermediate level program. Planned instruction may be provided or as an instructional unit within another course or other disciplinary activity.
 - The arts, including active learning experiences in art, music, dance and theatre.

PA Code, Title 22,
Chapter 4: Academic
Standards and
Assessments



PA Regulations Related to Arts Ed

- **Middle level education**
 - Curriculum and instruction in the middle level program must be standards based and focus on mastery of academic subjects, the development of critical and creative thinking, information literacy...
 - Planned instruction aligned with academic standards shall be provided to every student every year in the middle level program. Planned instruction may be provided as separate course or other disciplinary activity.
 - The arts, including active learning experiences in art, music, dance and theatre.
- **High school education**
 - Curriculum and instruction in the high school program must be standards based and provide all students opportunities to develop the skills of analysis, synthesis, evaluation and problem-solving and information literacy.
 - Planned instruction aligned with academic standards shall be provided to every student every year in the high school program. Planned instruction may be provided as separate course or other disciplinary activity.
 - The arts, including active learning experiences in art, music, dance and theatre.

PA Code, Title 22,
Chapter 4: Academic
Standards and
Assessments



What Does This Tell Us?

- Local school districts determine the way and the time subjects are offered.
- State graduation requirements do not require any specific course completions. They do require assessments meeting these standards: English Language Arts (Literature and Composition); Mathematics (Algebra I), Science and Technology, Environment and Ecology (Biology), and Civics and Government.





What Does This Tell Us?

- Advocacy is local!





2015 PMEA Policy Asks

- Additional money to be allocated into the basic education subsidy
 - Governor Wolf proposed an additional \$400 million
 - Republican budgets proposed an additional \$100 million
 - Some argument over that amount since other state obligations relating to education were cut





Great Inequity for Students Among 500 Districts

In 2010-11, current spending per pupil in Pennsylvania school districts ranged **from \$8,584** (Mount Carmel Area) **to \$22,140** (Lower Merion)

This means, in an average classroom of 25 students, a **gap of \$338,900 per classroom per year.**

**Inequitable and Inadequate Resources in a
Standards-Based Environment with
Equal Expectations for All Students**

Provided by Ron Cowell, EPLC





2015 PMEA Policy Asks

- A Fair Funding Formula
- Constitutional Standard (Article III, Section 14)
- “The General Assembly shall provide for the maintenance and support of a thorough and efficient system of public education to serve the needs of the Commonwealth.”
- 1965 – General Assembly enacted a law required the state to pay at least 50% of total cost of public ed. State funding did not always meet this requirement.
- 1983 – New funding formula – repealed 50% funding guarantee. Wealthiest districts were guaranteed a minimum increase (if they needed it or not) and poorest districts were capped by a maximum increase (regardless of greater need).
- 2005 – State set a target of \$8,500 and increased in subsequent years. But, the state never provided the funding to achieve this.





2015 PMEA Policy Asks

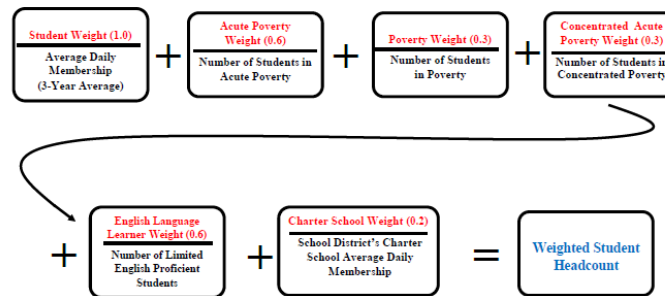
- A Fair Funding Formula
- 2008 – Costing Out study aimed to distribute funding based on real data from school districts using metrics liked number of students, poverty levels, local tax effort and ELL students. State never fully funded this formula.
- The 2008 formula caused disagreements over what weights were used to calculate “adequate” funding.
- Also have the hold harmless clause which means a district can’t receive less money than they did the previous year even if demographics have changed, population loss, etc.
- And, we live in a world of school choice and charter schools are on the rise so districts are faced with these costs as well.



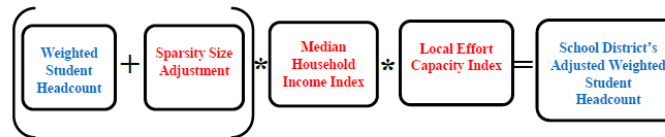


Basic Education Funding Commission Report

Weighted Basic Education Student Headcount Equation



Funding Distribution Number Equation



Final School District Distribution Equation





2015 PMEA Policy Asks

- Restoring the Arts Content Advisor Position at the Pennsylvania Department of Education
- The momentum is there.
- Support is there – Rep. Eddie Day Pashinski
- Things are on hold at PDE because of the lack of a budget.
- Dave Dietz contracted at PDE to work on the arts, however this isn't the Content Advisor Position





2015 PMEA Policy Asks



Pennsylvania Arts
Education Network

- Data
- Looking at available PDE data – sorting through it – what do we have and what do we need?
- That helps to inform future asks.





Questions?

